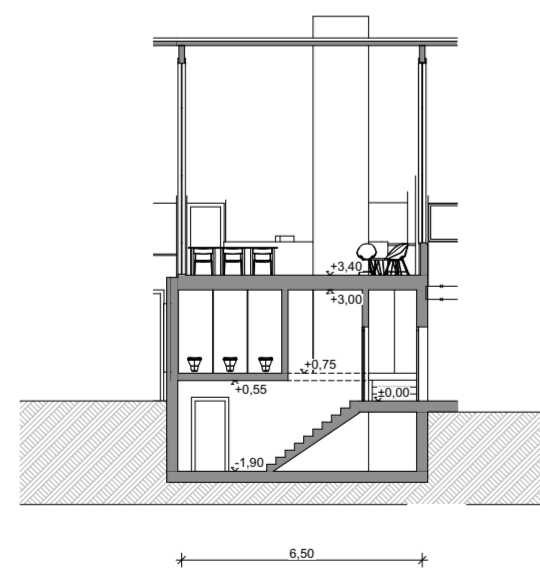
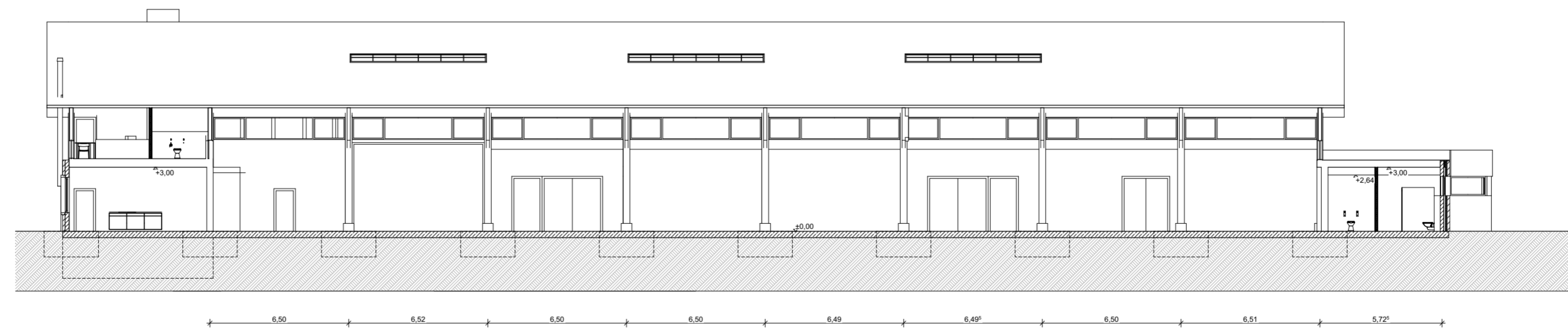


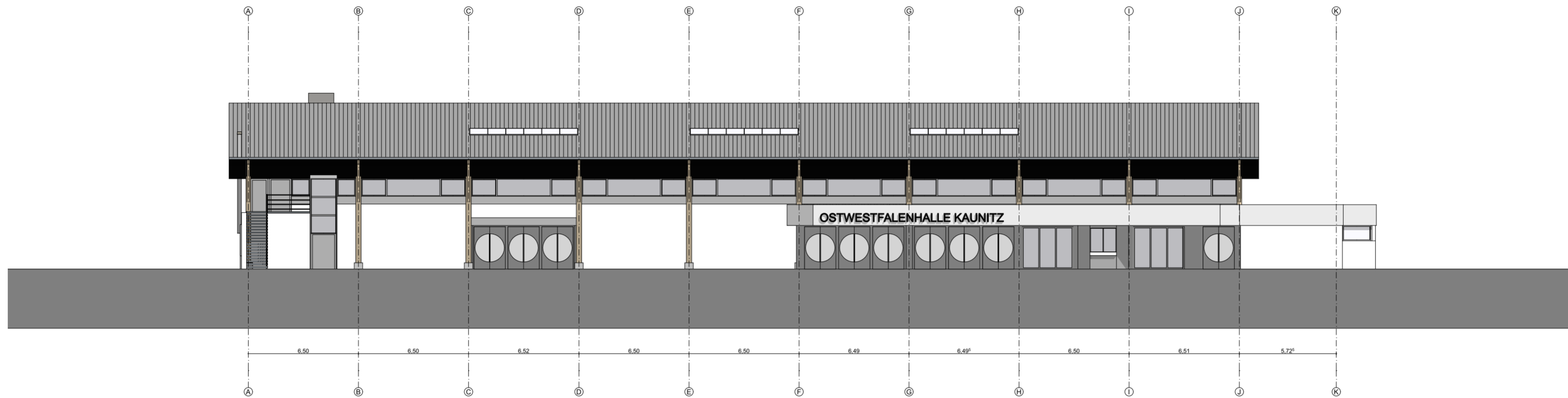
Schnitt A-A



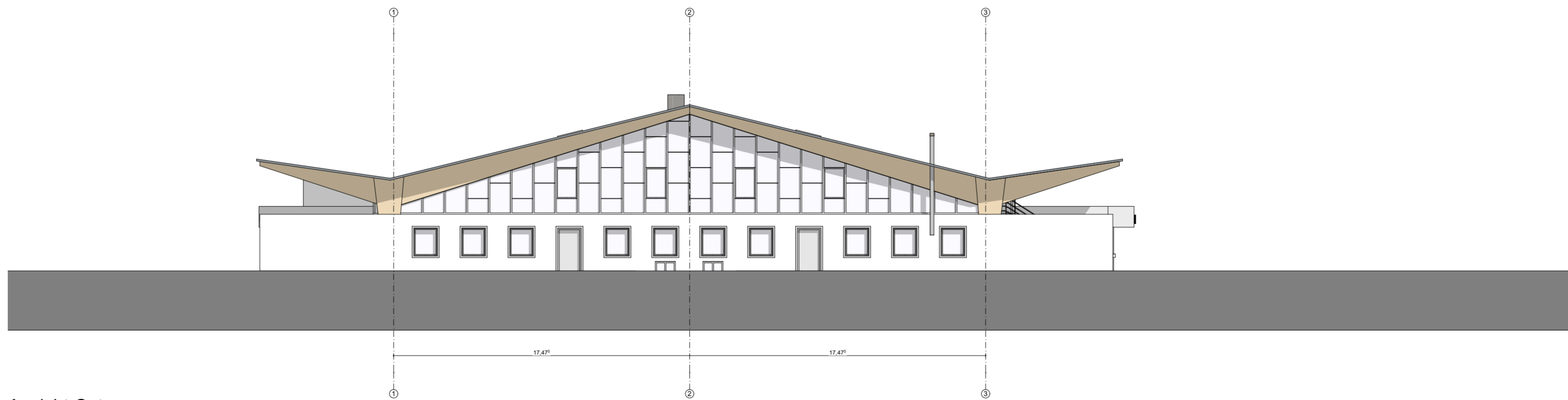
Schnitt C-C



Schnitt B-B



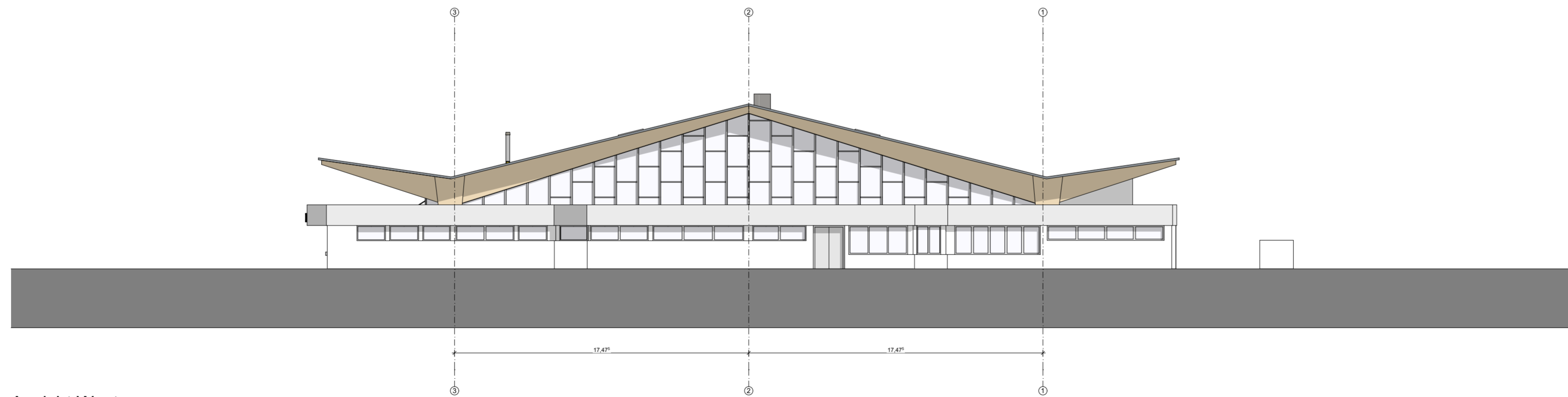
Ansicht Norden



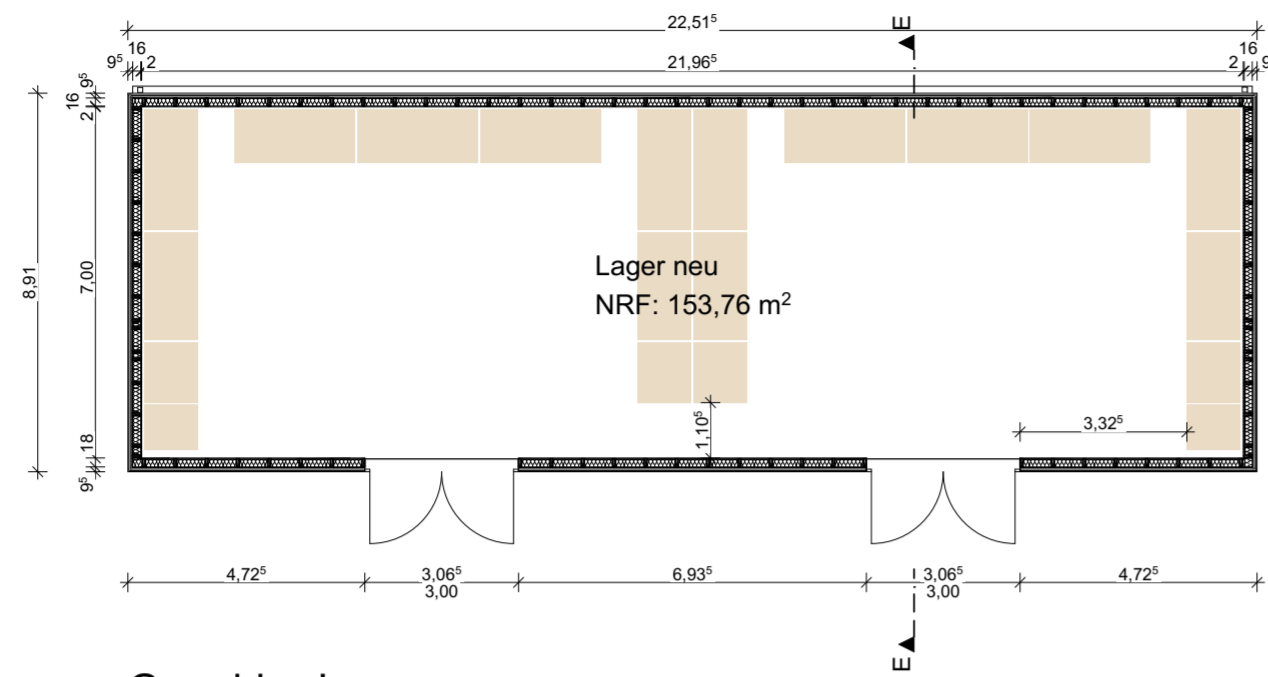
Ansicht Osten



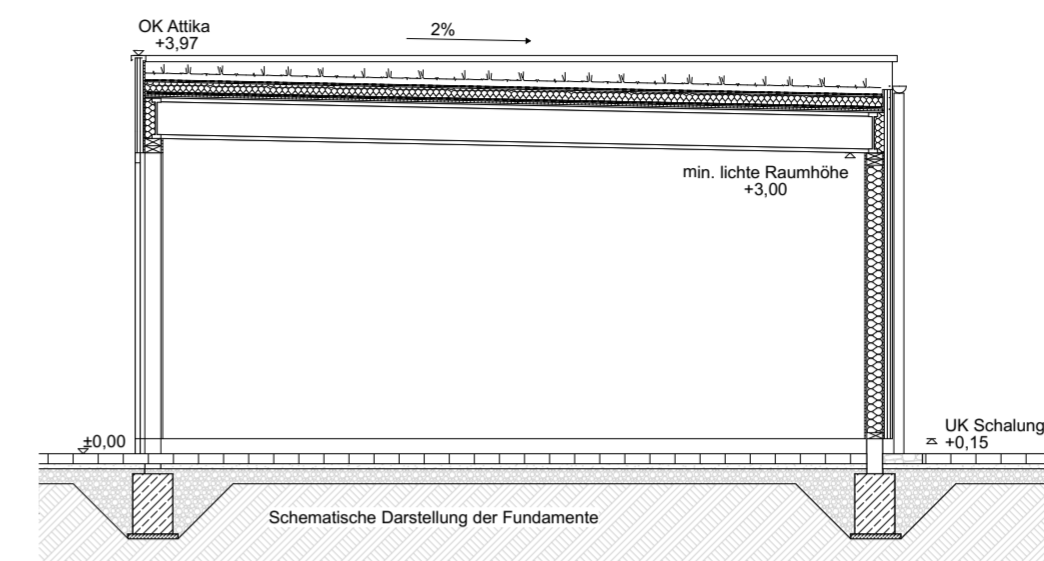
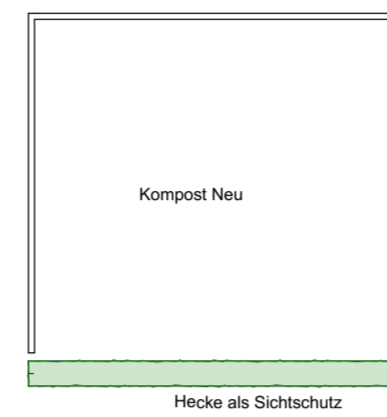
Ansicht Süden



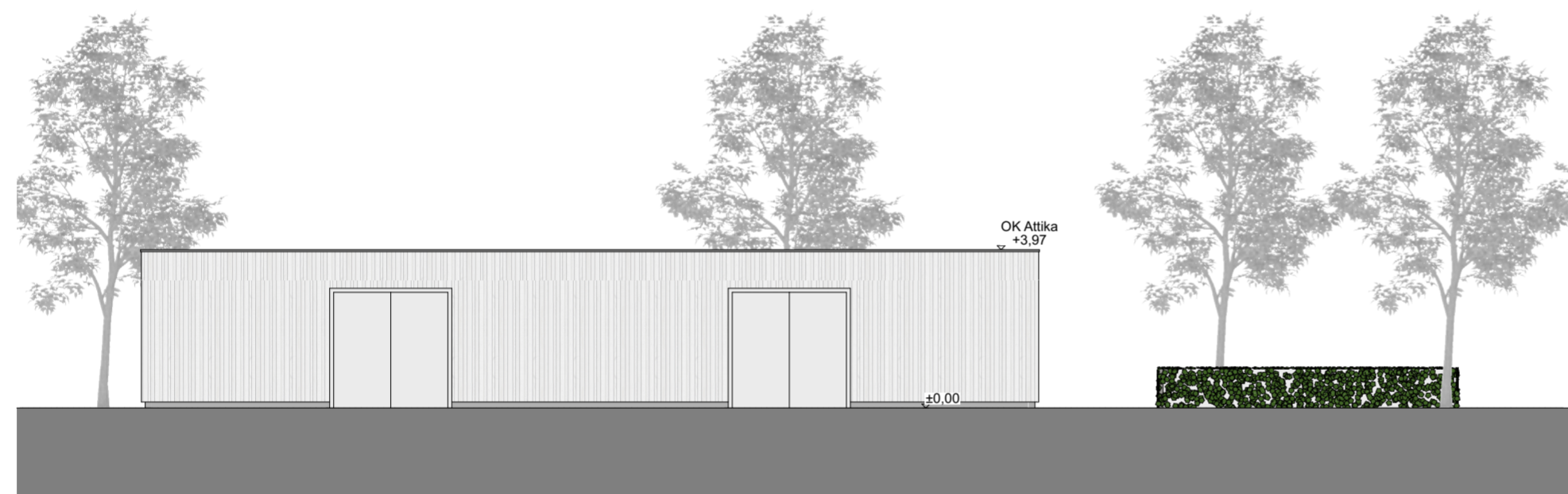
Ansicht Westen



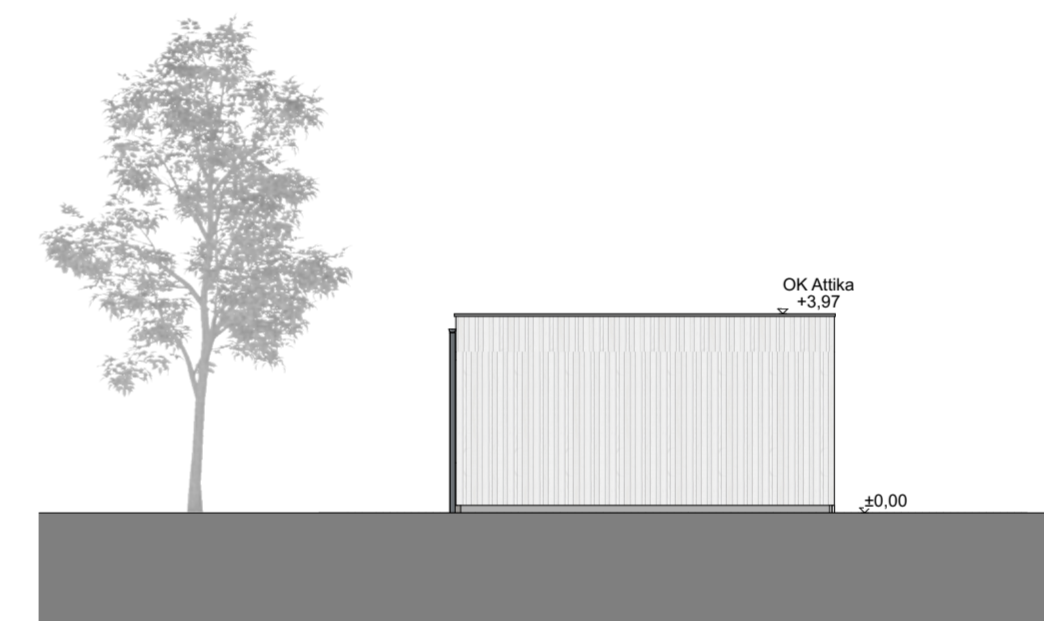
Grundriss Lager neu



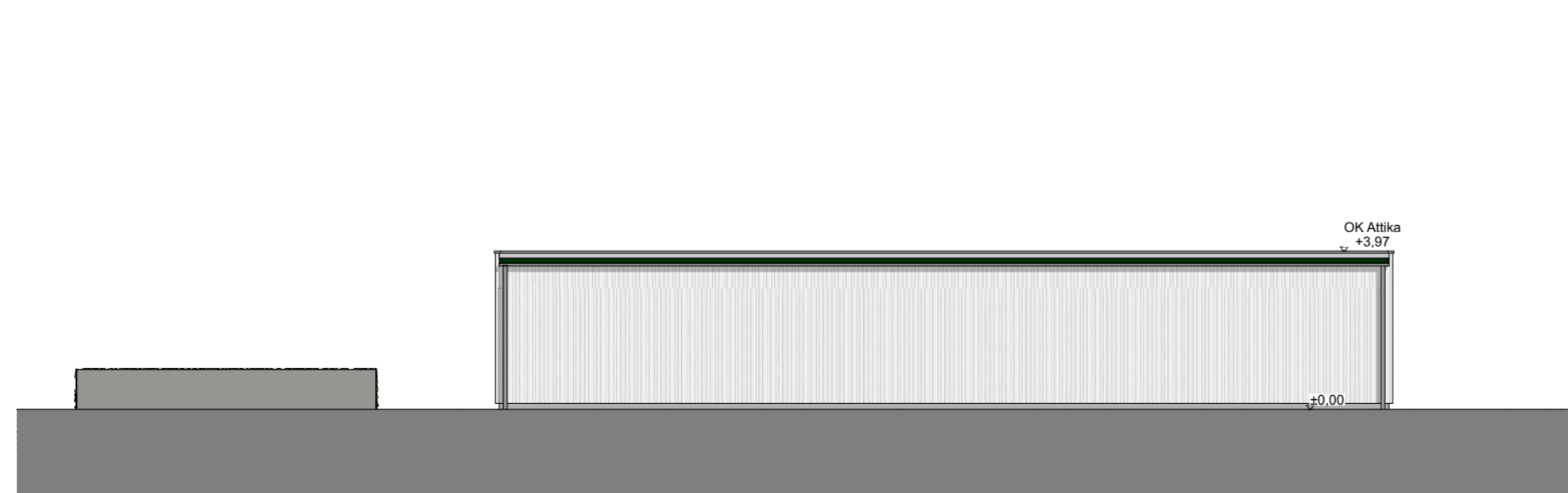
Schnitt E-E M 1:50



Ansicht Nord



Ansicht Ost



Ansicht Süd



Ansicht West



Haupteingang Nordseite / Lagergebäude



Süd-West Ansicht



Süd-Ost Ansicht



Lagergebäude mit Kompost